



## Green Reefers

www.greenreefers.com

M/V «Green Magic»  
 M/V «Green Magnific»  
 M/V «Green Majestic»  
 M/V «Green Maveric»  
 M/V «Green Music»



The vessel is fully gratings fitted and is built for a high flexibility for shipment of chilled/frozen cargo of both palletized and loose configuration.

The vessel's high square meter space allows for maximum utilization of vessels cubic capacity.

The cranes, the hatch-design and the decks without stanchions allow for fast and efficient cargo operations including transshipment operations

Equipped with a bow thruster, the need for tugs in port may sometimes be reduced, making the vessel cost effective.

Cargo Capacity			
Comp.	Cubic ft	SQM	Height
1A	31.784	358	2,20
2A	16.841	188	2,20
3A	15.258	170	2,35
4A	18.405	205	2,20
1B	17.645	212	2,20
2B	23.650	295	2,20
3B	22.501	281	2,20
4B	27.539	344	2,20
1C	12.629	150	2,20
2C	23.960	286	2,20
3C	23.985	287	2,20
4C	23.640	282	2,20
1D			
2D	20.013	245	2,20
3D	20.908	256	2,20
4D	11.636	143	2,20
<b>Total</b>	<b>310.395</b>	<b>3.702</b>	

Container Capacity		
	TEU	or FEU
Deck	69	34
Holds	38	-
<b>Total</b>	<b>107</b>	<b>34</b>

Equipped with 20 reefer plugs.

### Tonnage/capacities

DWT	6.105 tons
GT	5.089 tons
NT	3.341 tons
Cubic	310.395 cbft
Sqm u. deck	3.702 Sqm

### Main particulars

Built	1988 - 1993
LOA	135,7 meters
DMLD	9,3 meters
Beam	16 meters
Draft	7,62 meters
Main E.	8.900 bhp
Bowthr.	Yes
Speed	18 knots

### Tank capacities

IFO	835 cbm
MDO	81 cbm

### Hatches

All hatches to all holds/compartments have free opening of minimum 8,08 x 7,64 with exception of hatch to hold 1 where openings are 13,68 m x 7,64 m.

### Banana Sidedoors

8 Banana doors.

### Cranes:

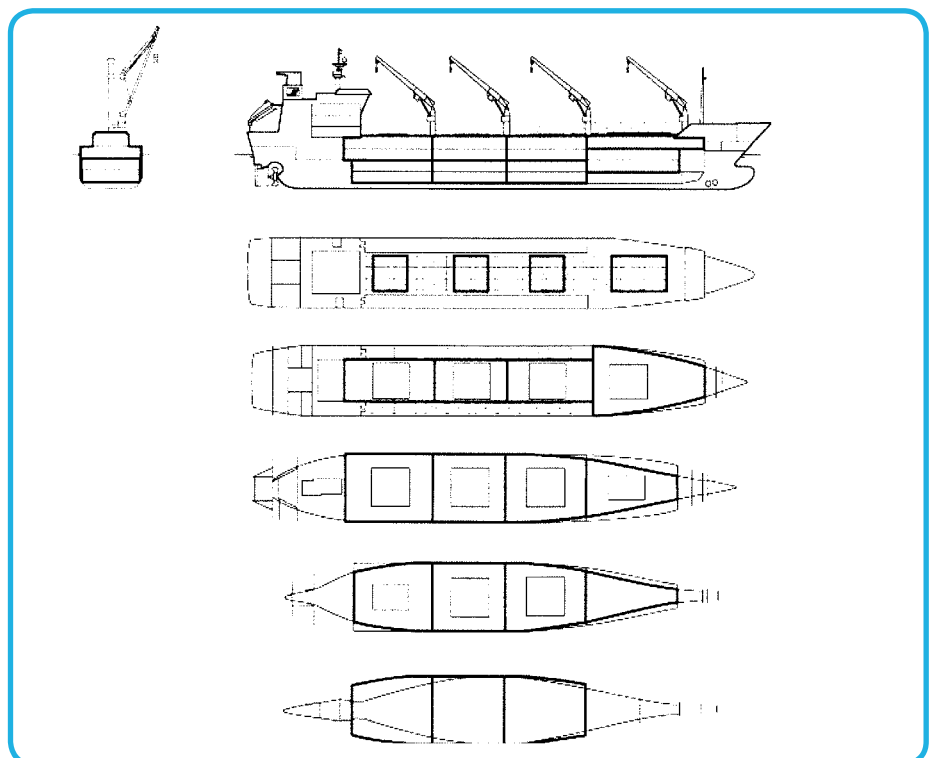
4 x 7 mt electric winch cranes, except Majestic:  
 4 x 5 mt electric winch crane.

### Temperatures

8 separate cooling sections, with sufficient compressor capacity for keeping -25 to +12 degrees Celsius.

### Ventilation

Air changes per hour: 90  
 Air renewal per hour: 3



Vessels particulars believed to be correct but not guaranteed